



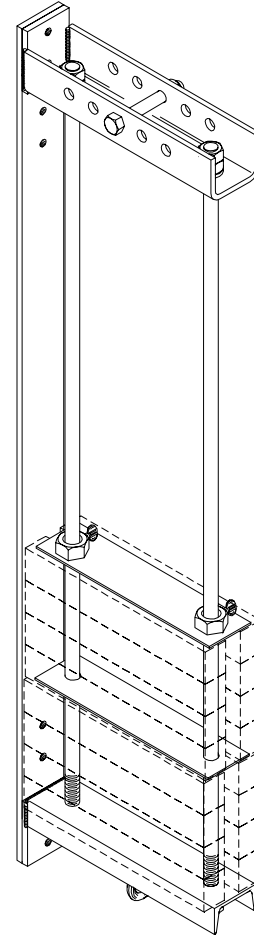
## Arbors

An arbor is a carriage that is designed to hold counterweights to balance the load on a pipe batten. Once an arbor is loaded properly, it can be raised or lowered with a minimum amount of effort. Arbors are available in many styles depending on the application and budgetary concerns.

### Series 991 Tee Guide Arbors

Series 991 counterweight arbors are designed to be captured and guided between tee or jay bar. They are available in one foot increments from 4 to 12 feet.

Each Series 991 counterweight arbor is fabricated from heavy steel shapes to provide a sturdy frame in which to load counterweights. Arbor rods are spaced 10" on center. Guides, described on the following page, are sold separately.

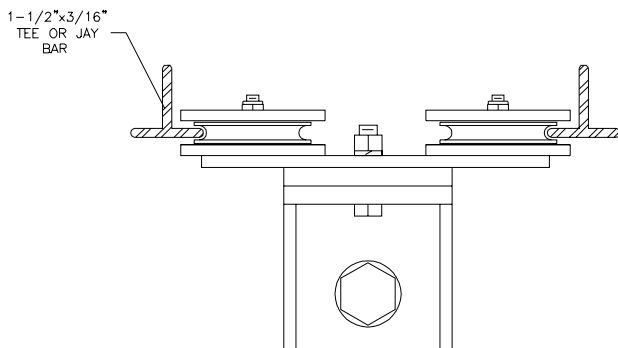
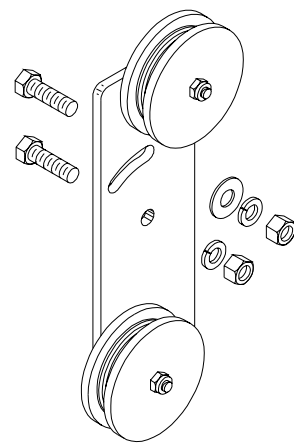


Model Number	Rod Length	Empty Weight	Capacity* 4" Wide Weights	Capacity* 6" Wide Weights	Spreader Plate Quantity
991x4	4 feet	50 lbs.	565 lbs.	835 lbs.	2
991x5	5 feet	67 lbs.	740 lbs.	1100 lbs.	3
991x6	6 feet	74 lbs.	915 lbs.	1365 lbs.	3
991x7	7 feet	81 lbs.	1090 lbs.	1630 lbs.	4
991x8	8 feet	89 lbs.	1265 lbs.	1895 lbs.	4
991x9	9 feet	96 lbs.	1440 lbs.	2160 lbs.	5
991x10	10 feet	104 lbs.	1615 lbs.	2425 lbs.	5
991x11	11 feet	111 lbs.	1790 lbs.	2690 lbs.	6
991x12	12 feet	118 lbs.	1965 lbs.	2955 lbs.	6

\* Capacities include the empty weight of the arbor and are calculated based on an industry average for cut steel counterweights. Actual capacities may vary by as much as 5%.

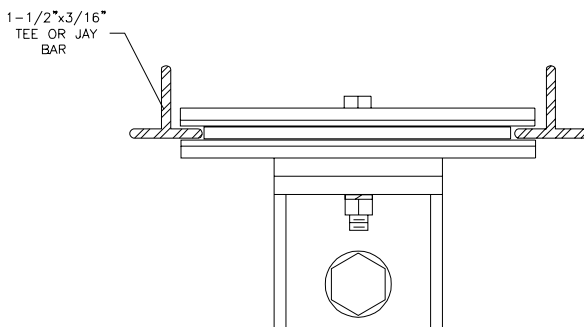
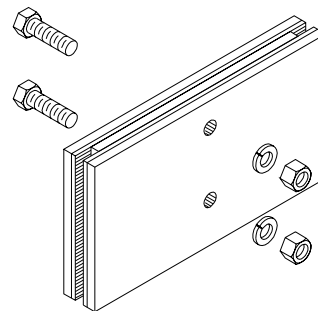
## Model 991RG Ball Bearing Roller Guide

Special ball bearing Nylatron GS guide wheels enable the arbor to roll instead of slide along guide tracks. This guide assembly provides the ultimate in ease in operation for a rigid guide system. Guide assemblies are adjustable for spacings of 6" or 8" centers. These guides may also be retrofitted onto existing counterweight arbors.



## Series 991G- Arbor Guide Shoe

Arbor guide shoes are constructed of high density polyethylene guides with full width 1/4" thick steel backing plates to capture the counterweight arbor. These guides enable the arbor to glide freely along steel tee or aluminum jay bar guides. The guide material's unique characteristics provide years of trouble-free service. Guides are available in standard spacings of 6", 8", 9", and 12" centers.



Arbor Guide Model	Tee or Jay Bar* Spacing	Unit Weight per Pair
991RG	6" to 8"	7.6 lbs.
991G-6	6"	7.2 lbs.
991G-8	8"	9.4 lbs.
991G-9	9"	10.6 lbs.
991G-12	12"	14.6 lbs.

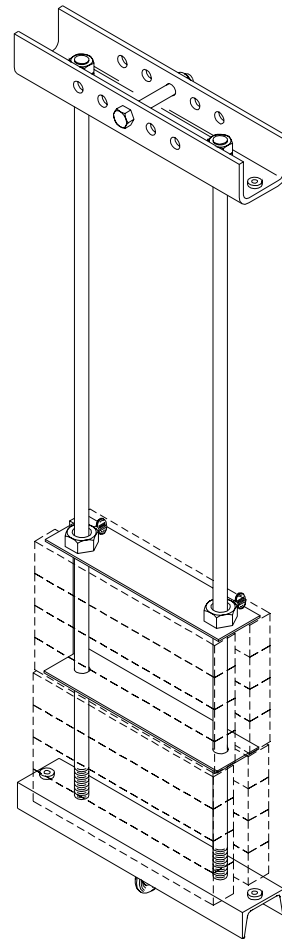
\* 1-1/2" x 1-1/2" x 3/16"



## Series 992 Wire Guide Arbor

Series 992 counterweight arbors are utilized when cost is a consideration. However, length of the guide wires must not exceed 30 feet. Adequate clearance between arbors and the building structure should be maintained. Replaceable Nylatron GS guide bushings are provided on top and bottom for smooth, quiet operation.

Each Series 992 counterweight arbor is fabricated from heavy steel shapes to provide a sturdy frame in which to load counterweights. Arbor rods are spaced 10" on center. They are available in one foot increments from 4 to 10 feet.



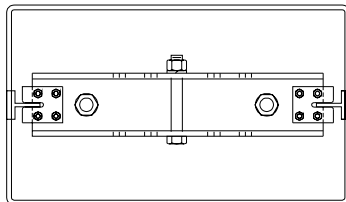
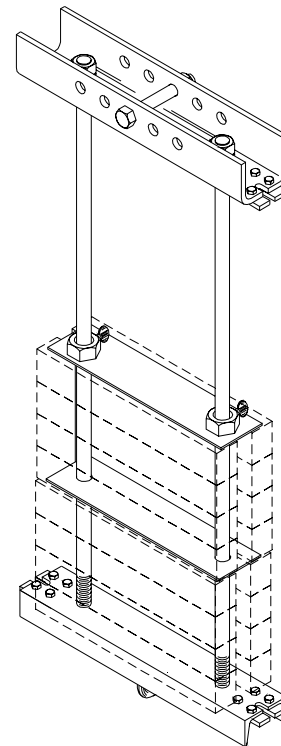
Model Number	Rod Length	Empty Weight	Capacity* 4" Wide Weights	Capacity* 6" Wide Weights	Spreader Plate Quantity
992x4	4 feet	35 lbs.	545 lbs.	815 lbs.	2
992x5	5 feet	38 lbs.	715 lbs.	1075 lbs.	3
992x6	6 feet	42 lbs.	885 lbs.	1335 lbs.	3
992x7	7 feet	45 lbs.	1055 lbs.	1595 lbs.	4
992x8	8 feet	49 lbs.	1225 lbs.	1855 lbs.	4
992x9	9 feet	52 lbs.	1395 lbs.	2115 lbs.	5
992x10	10 feet	56 lbs.	1565 lbs.	2375 lbs.	5

\* Capacities include the empty weight of the arbor and are calculated based on an industry average for cut steel counterweights. Actual capacities may vary by as much as 5%.

## Series 993 Lattice Track Arbor

Lattice track arbors are most often used in conjunction with fire safety curtains, act curtains, and paint frames. The arbor assembly is captured and guided between opposing steel tees in a separate system independent of the tee or jay bar wall.

Each Model 993 counterweight arbor is fabricated from heavy steel shapes to provide a sturdy frame in which to load counterweights. Arbor rods are spaced 10" on center. They are available in one foot increments from 4 to 10 feet.



Series 993 Arbor in No. 660 Lattice Track  
Plan View

Model Number	Rod Length	Empty Weight	Capacity* 4" Wide Weights	Capacity* 6" Wide Weights	Spreader Plate Quantity
993x4	4 feet	36 lbs.	545 lbs.	815 lbs.	2
993x5	5 feet	39 lbs.	715 lbs.	1075 lbs.	3
993x6	6 feet	43 lbs.	885 lbs.	1335 lbs.	3
993x7	7 feet	46 lbs.	1055 lbs.	1595 lbs.	4
993x8	8 feet	50 lbs.	1225 lbs.	1855 lbs.	4
993x9	9 feet	53 lbs.	1395 lbs.	2115 lbs.	5
993x10	10 feet	57 lbs.	1565 lbs.	2375 lbs.	5

\* Capacities include the empty weight of the arbor and are calculated based on an industry average for cut steel counterweights. Actual capacities may vary by as much as 5%.

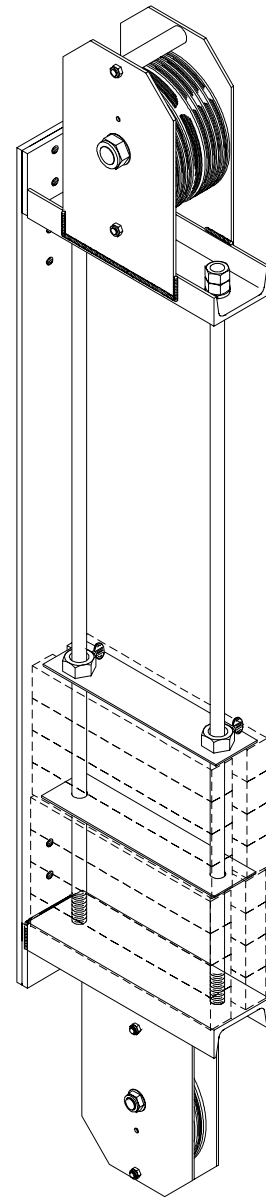


**Series 991C**  
**Series 991N**  
**Tee Guide Double Purchase Arbors**

Double purchase rigging is used when arbor travel is restricted. For each foot of arbor travel, the batten travels two feet. In order to balance the load on the pipe batten, two pounds of counterweight must be added for each pound of load on the pipe batten. The efficiency of this style of arbor is diminished, resulting in more effort required to raise or lower a balanced set.

Model 991C and 991N double purchase counterweight arbors are designed to be captured and guided between tee or jay bar. Each arbor is fabricated from heavy steel shapes to provide a sturdy frame in which to load counterweight. Arbor rods are spaced 10" on center. They are available in increments from 6 to 12 feet. Guides, described on page 19, are sold separately.

The arbor top is outfitted with a sheave assembly to reeve the lift and purchase lines back toward the head block. The arbor bottom is outfitted with a sheave assembly to reeve the purchase line from the tension block back toward the floor. Provisions must be made for a separate tie-off of the lift and purchase lines at the head block and the purchase line at the floor area.



Model Number	Rod Length	Top Sheave Material	Cable Groove Quantity	Empty Weight	Capacity* 4" Wide Weights	Capacity* 6" Wide Weights	Spreader Plate Quantity
991C7x8	8 feet	Cast Iron	7	157 lbs.	1335 lbs.	1965 lbs.	4
991N7x8	8 feet	Nylatron GSM	7	139 lbs.	1315 lbs.	1945 lbs.	4
991N10x8	8 feet	Nylatron GSM	10	175 lbs.	1350 lbs.	1980 lbs.	4
991C7x10	10 feet	Cast Iron	7	174 lbs.	1685 lbs.	**	5
991N7x10	10 feet	Nylatron GSM	7	156 lbs.	1665 lbs.	2480 lbs.	5
991N10x10	10 feet	Nylatron GSM	10	197 lbs.	1710 lbs.	2520 lbs.	5
991C7x12	12 feet	Cast Iron	7	191 lbs.	2035 lbs.	**	6
991N7x12	12 feet	Nylatron GSM	7	173 lbs.	2015 lbs.	**	6
991N10x12	12 feet	Nylatron GSM	10	219 lbs.	2070 lbs.	**	6

\* Capacities include the weight of the arbor and are calculated based on an industry average for cut steel counterweights. Actual capacities may vary by as much as 5%.

\*\* Contact the factory for modified arbors designed for heavy duty use. All sheaves include one groove for 3/4" purchase line.